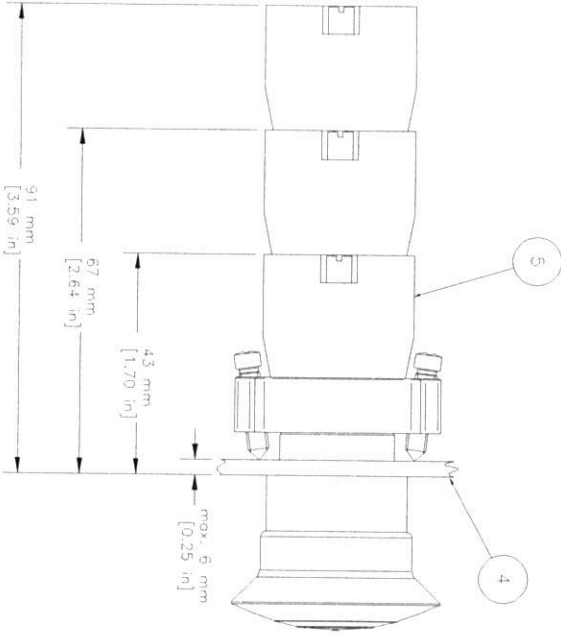
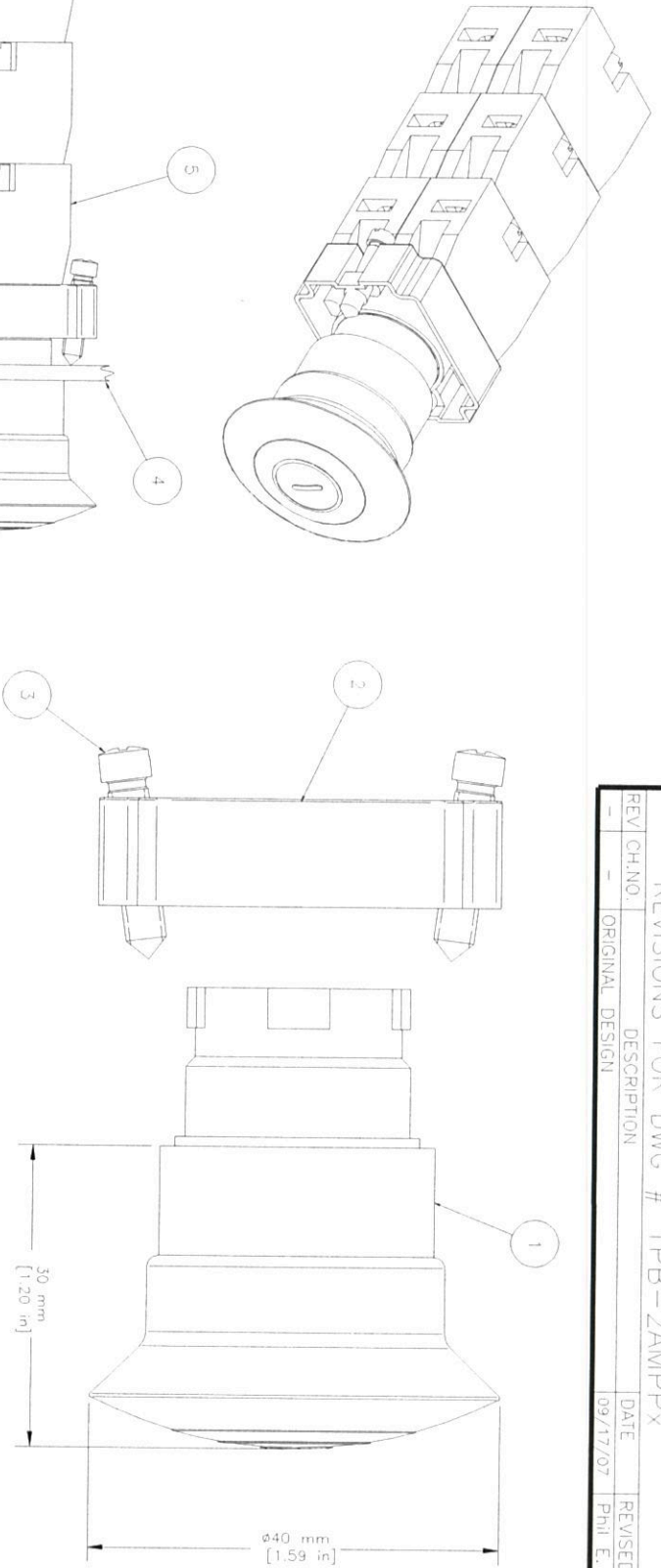


| REVISIONS FOR DWG # 1PB-2AMPPx | | | | |
|--------------------------------|-------|-----------------|----------|-------------|
| REV | CH/NO | DESCRIPTION | DATE | REVISION BY |
| - | - | ORIGINAL DESIGN | 09/17/07 | Phil E. |



| ITEM | DESCRIPTION | CAT. NO. | COLOR | MIN. QTY. | MAX. QTY. |
|------|--|--|--|----------------------------|----------------------------|
| 1 | Mushroom Push-Pull Operator (comes with mounting bracket 2BRK) | 2AMPP1 2AMPP2 2AMPP3 2AMPP4 2AMPP6 2AMPP8 | White Black Green Red Blue Yellow | 1 1 1 1 1 1 | 1 1 1 1 1 1 |
| 2 | Mounting Bracket | 2BRK | - | 1 | 1 |
| 3 | Mounting Bracket Screws | incl. in 2BRK | - | 2 | 2 |
| 4 | Panel | - | - | - | - |
| 5 | Switch Contacts | S1 | Green | 1 | 6 |
| | | S2 | Red | 1 | 6 |
| | | S3 | Green/Gray | 1 | 6 |
| | | S4 | Red/Gray | 1 | 6 |

TITLE: 22mm Non-Illuminated Mushroom Operator Push-Pull Metal Operators 2AMPPx (x=color)

| | | | |
|----------------------------------|----------|------------------------|---------------|
| DRAWN BY: Philipp Ernstberger | 09/17/07 | DRAWING NO: 1PB-2AMPPx | REV: - |
| CHECKED BY: Loszlo Gaborcsei | 09/17/07 | SCALE: - | SHEET: 1 OF 1 |
| RELEASED BY: Philipp Ernstberger | 09/17/07 | | |

UNLESS OTHERWISE SPECIFIED
 ALL DIMENSIONS ARE IN MILLIMETERS
 THIRD ANGLE PROJECTION

TOLERANCE
 XX ±1mm
 XX.X ±0.5mm
 XX.XX ±0.2mm
 ALL ±.mm

This Drawing is the property of
Altech Corp
 35 Royal Road
 Flemington NJ 08822-6000
 (908) 306-9400 • Fax: (908) 808-9490

AND IS A CONFIDENTIAL DISCLOSURE
 LENT WITHOUT CONSIDERATION OTHER
 THAN THE BORROWER'S AGREEMENT
 THAT IT SHALL NOT BE REPRODUCED,
 COPIED, LENT, OR DISPOSED OF
 DIRECTLY OR INDIRECTLY NOR USED
 FOR ANY PURPOSE OTHER THAN THAT
 FOR WHICH IT IS SPECIFICALLY
 FURNISHED

24HR-0

22mm Specifications

Electrical and Mechanical Characteristics

| | |
|-----------------------|--|
| Standard conformity: | IEC 60947-5-1 |
| Approvals: | VDE0660 CSA - C22.2 No. 14-95 UL508 IEC 947 - 5 (1) 1990, IS 13947 ASTA UK certified as per IEC 947 - 5 - (1) 1990 |
| Degree of protection: | IP 65 as per IEC 529 NEMA Type 4X, 12 as per UL50 |
| Temperature Range: | - 25°C to + 70°C (-13°F to +158°F) |

Contact Block

| | |
|---|---|
| Rated insulation voltage: | 500V |
| Rated thermal current: | 10A |
| Contact operation: | self-wiping, slow break NO or NC |
| Make and break capacity as per IEC 947 - 5 - (1) 1990: | AC 15 4A, 415V AC DC 13 0.5A, 110V DC |
| As per CSA - C22.2 No. 14-95, UL508: | A600 Q600 (pilot Duty) |
| Terminal capacity: | minimum 1 x 0.5 mm ² (20 AWG) maximum 2 x 1.5 ² mm ² (2x16 AWG) or 1 x 2.5 mm ² (1x14 AWG) |
| Terminal marking: | 1-2 for NC, 3-4 for NO |
| Short circuit protection: | 10A cartridge fuse HRC type, rated for resistive loading |
| Mechanical life: | Over 1 million operations |

Electric rating (for 1 million operation cycles,
operation at 3600 cycles per hour, load factor 0.5)

| | | | | |
|-------|---|----|-----|-----|
| AC 15 | V | 24 | 120 | 230 |
| | A | 4 | 3 | 2 |

| | | | |
|-------|---|-----|-----|
| DC 13 | V | 24 | 110 |
| | A | 0.5 | 0.2 |

Modules for Pilot Lights & Illuminated Switches with LED Bulbs

Current consumption (applicable to all colors)

| | |
|--|---|
| 24 VAC/DC, 100 VAC & 240 VAC: | max. 20 mA |
| 110 VDC: | max. 15 mA |
| 220 VDC: | max. 10 mA |
| Service life (at nominal voltage and at ambient temperature of 25°C): | 100,000 hours |
| Voltage limits (nominal voltage): | <20% of rated voltage> |
| Short circuit protection: | on specific request |
| Terminal capacity: | min. 1 x 0.5 mm ² (20 AWG), max. 2 x 1.5 mm ² (2x16 AWG) or 1 x 2.5 mm ² (1x14 AWG) |