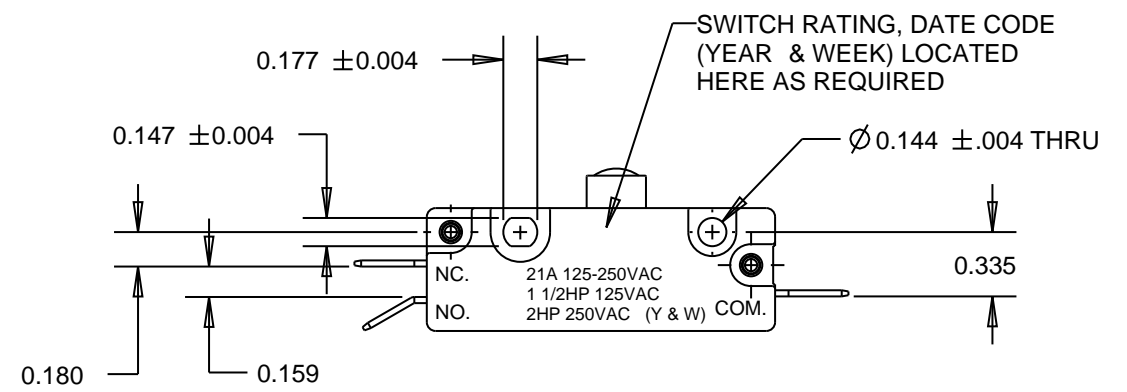
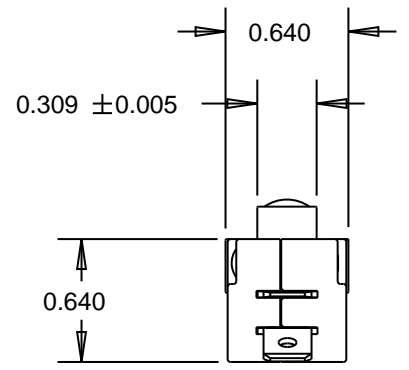
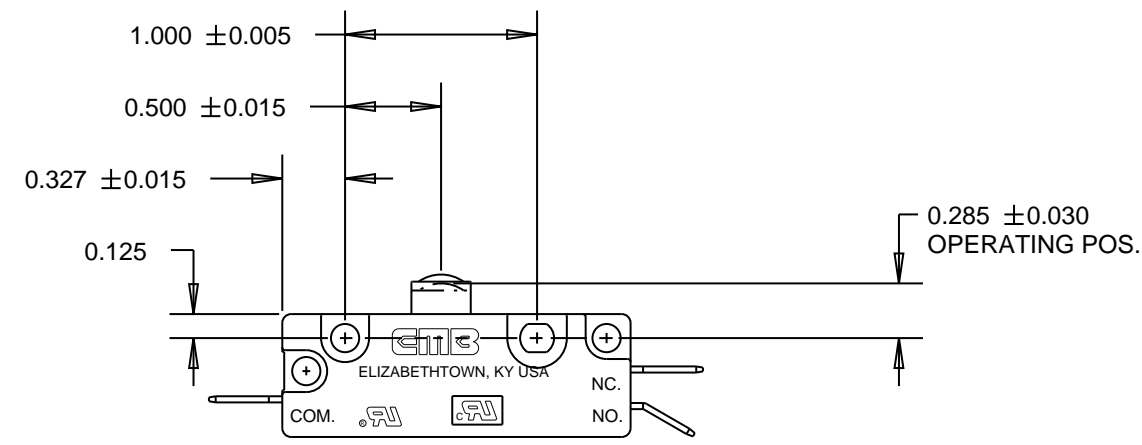
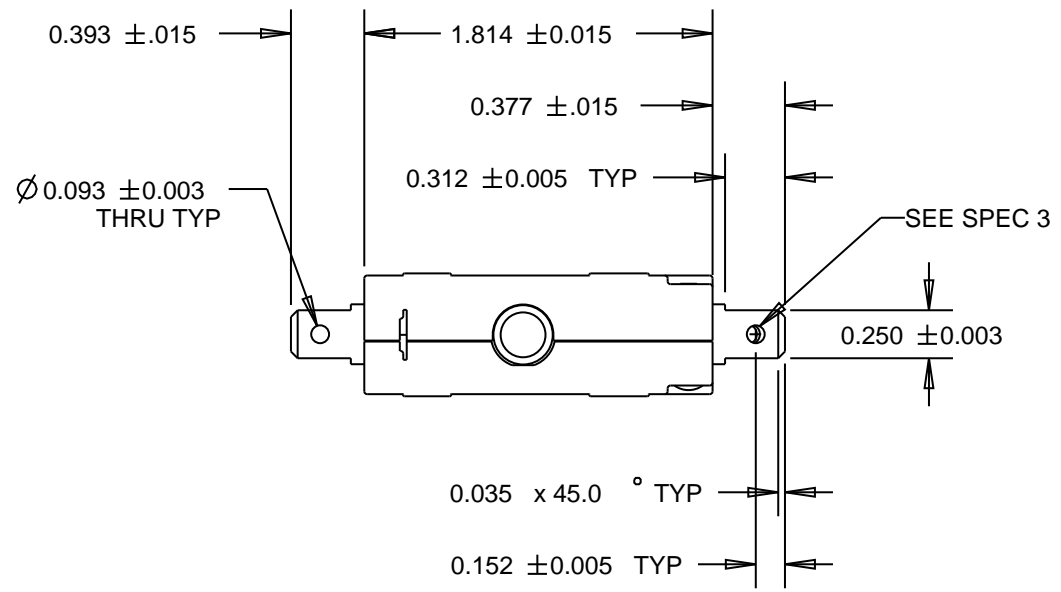


REVISIONS					
ECN	REV	DESCRIPTION	DATE	REVISED BY	APPROVED
2067	A	RELEASED FOR PRODUCTION	01/08/2003		



SPECIFICATIONS:

- MODEL 301 SERIES SNAP-ACTION SWITCH SINGLE POLE DOUBLE THROW CIRCUITRY WITH POWER LOAD SWITCHING CAPACITY - 21 AMPS 125-250 VAC, 1 1/2 HP 125 VAC, 2 HP 250 VAC

 OPERATING FORCE - 20 OZ. MAX
 RELEASE FORCE - 3 OZ. MIN
 PRETRAVEL - 0.062 MAX
 OVERTRAVEL - 0.050 MIN
 MOVEMENT DIFFERENTIAL - 0.015 MAX
- SWITCH IS U.L. RECOGNIZED AND C.S.A. CERTIFIED
- TERMINALS - 0.032 BRASS QUICK CONNECT MALE TAB

UNLESS OTHERWISE SPECIFIED	SIGNATURES	DATE
DIMENSIONS ARE IN INCHES TOLERANCE ON	DRAWN MPB	08-Jan-03
2 PL DECIMALS ±	CHECKED	
3 PL DECIMALS ± 0.010	APPROVED	
ANGLES ± 2.000		
FRACTIONS ±		
NOTICE THESE DRAWINGS AND ALL SPECIFICATIONS ARE THE SOLE PROPERTY OF EMB CORP. AND SHALL NOT BE USED AS THE BASIS FOR MANUFACTURING OR SALE WITHOUT PRIOR WRITTEN PERMISSION.	▼ PROCESS CAPABILITY REQUIRED ▽ MONITORING REQUIRED CRITICAL CHARACTERISTIC CONTROL QP3 - 3.2.4	

EMB CORPORATION
ELIZABETHTOWN, KENTUCKY

GENERAL PURPOSE SNAP ACTION SWITCH

SIZE B	DWG NO 304-9051
SCALE 1.000	FILE NO. 304-9051 SHEET 1 of 1

DISTR TO