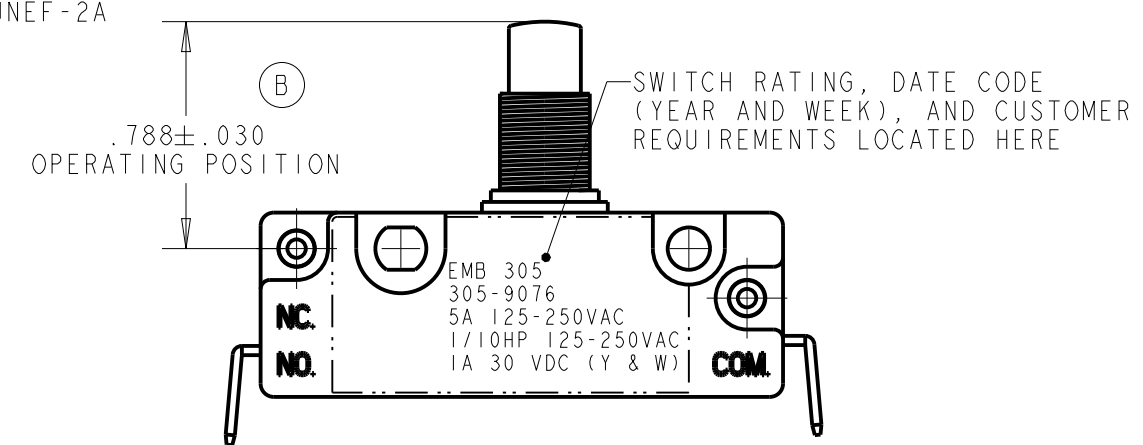
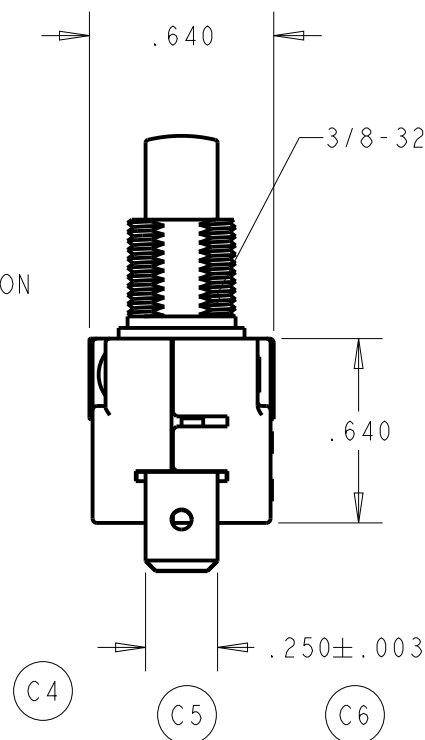
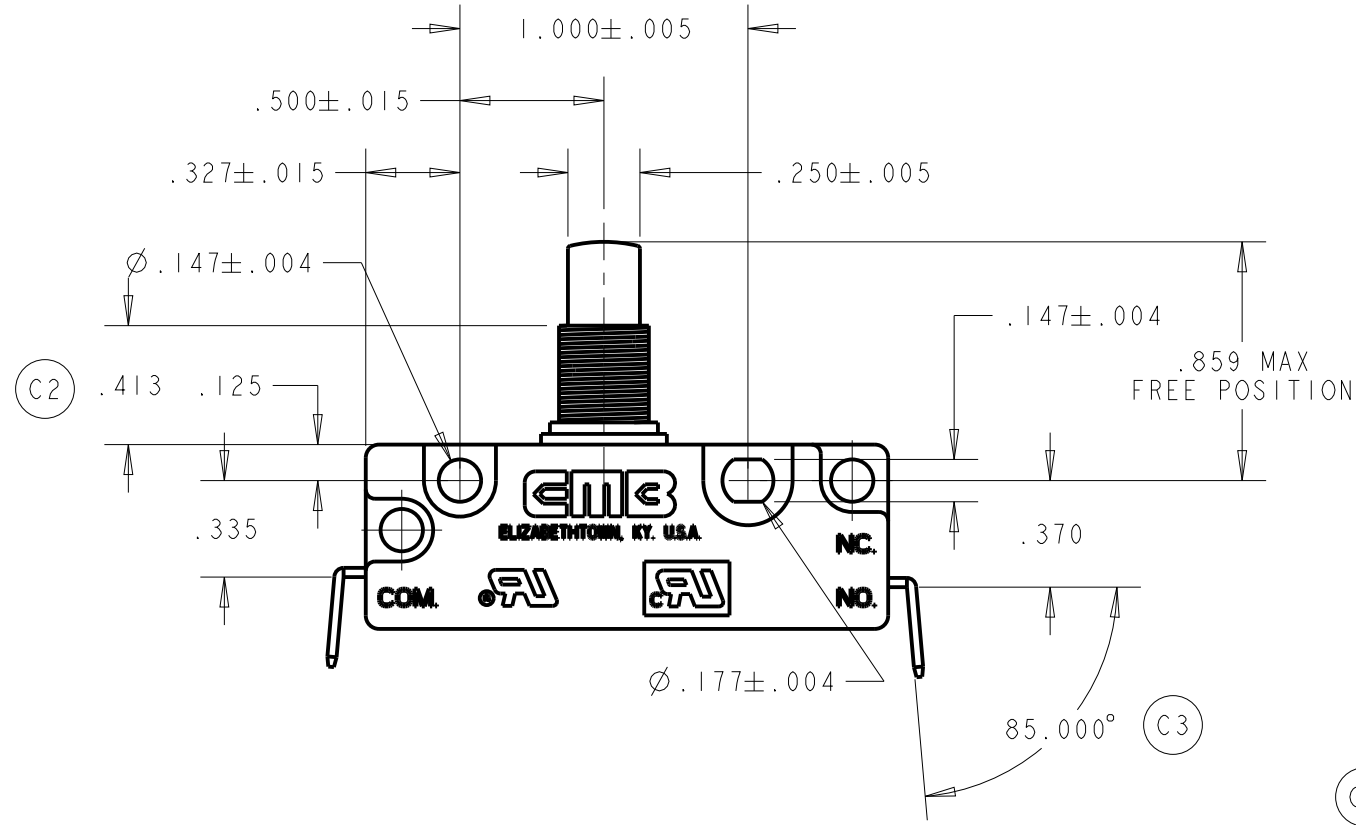
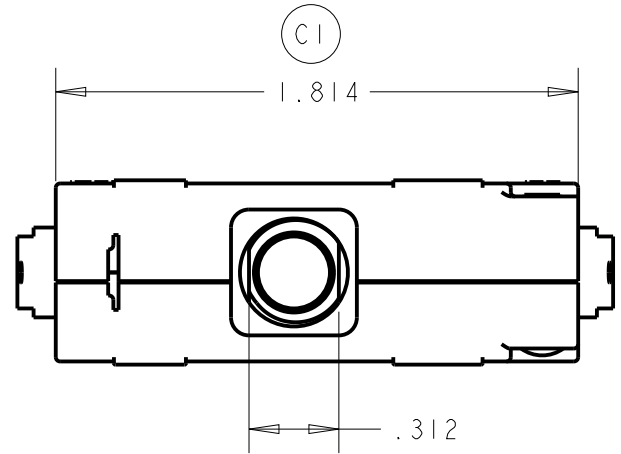


REVISIONS					
ECN	REV	DESCRIPTION	DATE	REVISED BY	APPROVED
2663	B	.788±.030 WAS .812±.030	06/20/2012	DKS	AEP
2679	C1	1.814 WAS 1.814±.015 (TOP VIEW)	08/20/2013	MPB	
	C2	.413 WAS .406±.010 (FRONT VIEW)			
	C3	85.000° WAS 80.000° (FRONT VIEW)			
	C4	REMOVED .152±.005 (RIGHT VIEW)			
	C5	REMOVED .035 x 45.0° (RIGHT VIEW)			
	C6	REMOVED .093±.003 (RIGHT VIEW)			
	C7	ADDED UL 310 TO SPEC 3			



SPECIFICATIONS:

- MODEL 300 SERIES SNAP-ACTION SWITCH S.P.S.T. NORMALLY OPEN CIRCUITRY WITH POWER LOAD SWITCHING CAPACITY - 5 AMPS 125-250 VAC, 1/10 HP 125-250 VAC, 1A 30 VDC  
 OPERATING FORCE - 15 OZ. MAX  
 RELEASE FORCE - 3 OZ. MIN  
 PRETRAVEL - .100 MAX  
 OVERTRAVEL - .100 MIN  
 MOVEMENT DIFFERENTIAL - .050 MAX
- SWITCH IS UL AND ULc RECOGNIZED
- TERMINALS - .032 THICK QUICK CONNECT MALE TAB PER UL 310
- 3/8-32 UNEF-2B HEX PANEL NUTS TO BE BULK PACKED 1 PER SWITCH

UNLESS OTHERWISE SPECIFIED	SIGNATURES	DATE
DIMENSIONS ARE IN INCHES TOLERANCE ON	DRAWN RNH	10/12/2010
2 PL DECIMALS ± .030	CHECKED MPB	10/13/2010
3 PL DECIMALS ± .010	APPROVED AEP	10/13/2010
ANGLES ± 3.000		
FRACTIONS ±		
NOTICE THESE DRAWINGS AND ALL SPECIFICATIONS ARE THE SOLE PROPERTY OF EMB CORP. AND SHALL NOT BE USED AS THE BASIS FOR MANUFACTURING OR SALE WITHOUT PRIOR WRITTEN PERMISSION.	▼ PROCESS CAPABILITY REQUIRED ▽ MONITORING REQUIRED	CRITICAL CHARACTERISTIC CONTROL QP3 - 3.2.4

<b>EMB CORPORATION</b> ELIZABETHTOWN, KENTUCKY		
GENERAL PURPOSE SNAP ACTION SWITCH		
SIZE B	DWG NO 305-9076	
SCALE 1.500	FILE NO. 305-9076	SHEET 1 of 1

DISTR TO