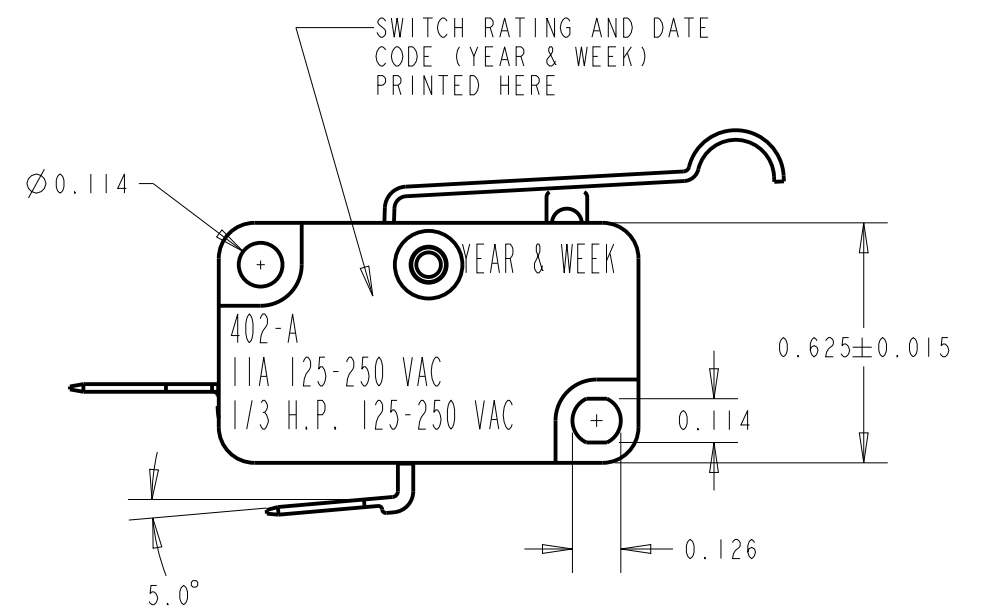
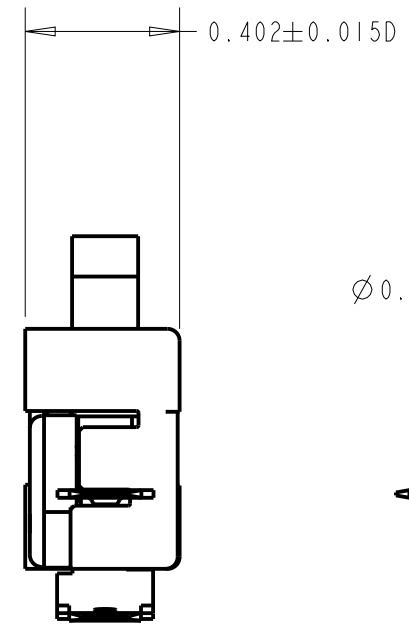
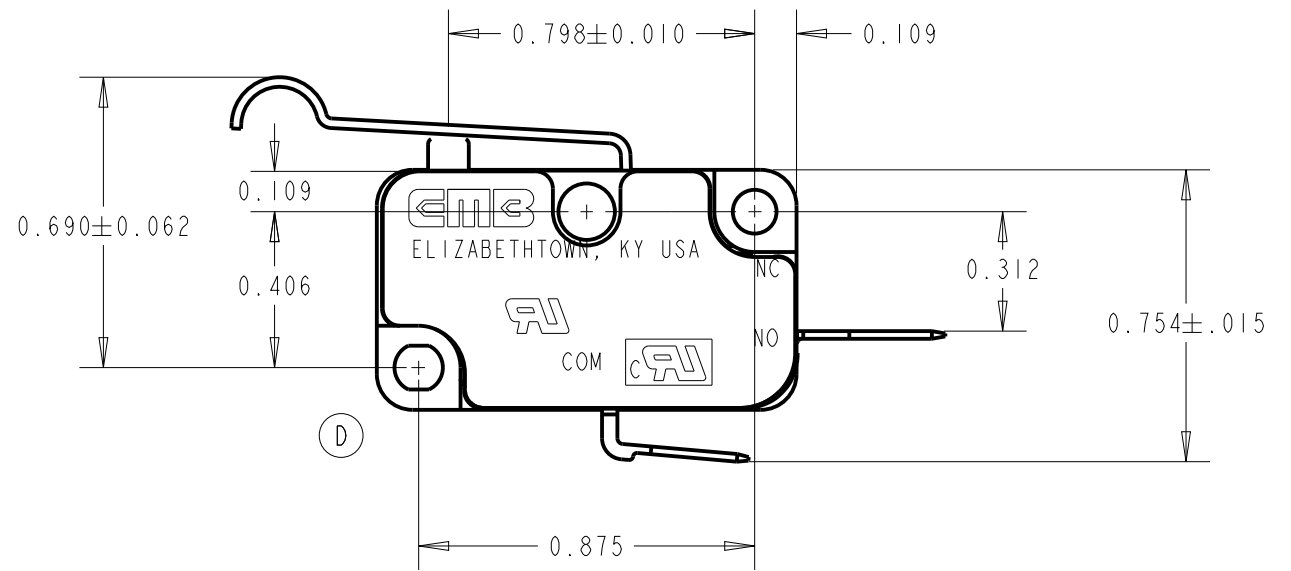
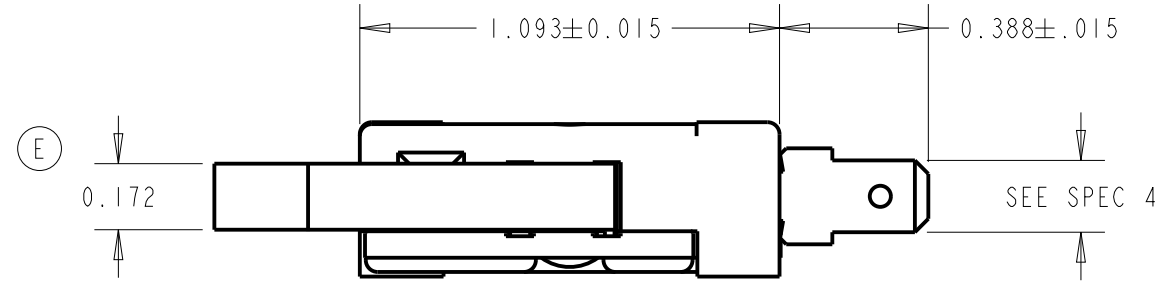


REVISIONS					
ECN	REV	DESCRIPTION	DATE	REVISED BY	APPROVED
2025	D	DELETED CSA SYMBOL: ADDED C-UL SYMBOL	08/01/2002	DKS	AEP
2634	E	0.172 WAS 0.172±0.002, SPEC. OVERTRAVEL, WAS 0.100", NOW 0.060"	06/22/2011	DKS	



SPECIFICATIONS:

- MODEL 401 SERIES MINIATURE SNAP-ACTION SWITCH
SINGLE POLE SINGLE THROW N.O. CIRCUITRY
11 AMPERES, 125-250 VAC
1/3 HP, 125-250 VAC
- OPERATING CHARACTERISTICS:
OPERATING FORCE - 150 MAX GRAMS
PRETRAVEL - 0.094 MAX IN.
OVERTRAVEL - 0.060 MIN IN.
DIFFERENTIAL - 0.032 MAX IN.
- SWITCH IS UL RECOGNIZED AND CSA CERTIFIED
- TERMINAL - 0.187 X 0.020 THK QUICK CONNECT MALE
TAB PER NEMA SPECIFICATIONS

UNLESS OTHERWISE SPECIFIED	SIGNATURES	DATE
DIMENSIONS ARE IN INCHES TOLERANCE ON	DRAWN A. PIERCE	8/29/96
2 PL DECIMALS ±	CHECKED DAS	9/12/96
3 PL DECIMALS ± 0.005	APPROVED NED	9/12/96
ANGLES ± 2.0 DEG		
FRACTIONS ±		
NOTICE THESE DRAWINGS AND ALL SPECIFICATIONS ARE THE SOLE PROPERTY OF EMB CORP. AND SHALL NOT BE USED AS THE BASIS FOR MANUFACTURING OR SALE WITHOUT PRIOR WRITTEN PERMISSION.	▼ PROCESS CAPABILITY REQUIRED ▼ MONITORING REQUIRED CRITICAL CHARACTERISTIC CONTROL QP3 - 3.2.4	

EMB CORPORATION
ELIZABETHTOWN, KENTUCKY

MINIATURE SNAP-ACTION SWITCH

SIZE B DWG NO 402-9072

SCALE 2.000 FILE NO. 402-9072 SHEET 1 of 1

DISTR TO