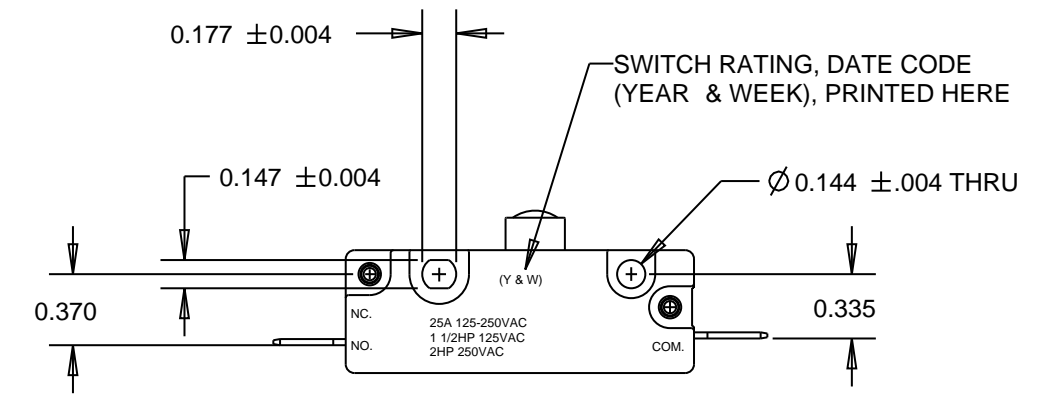
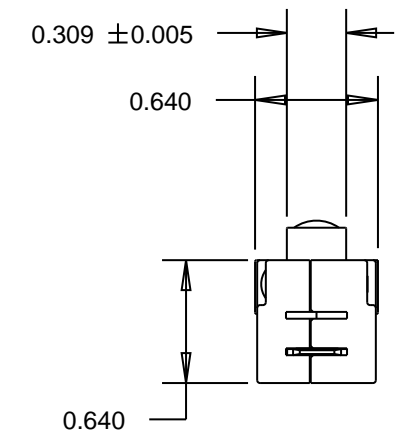
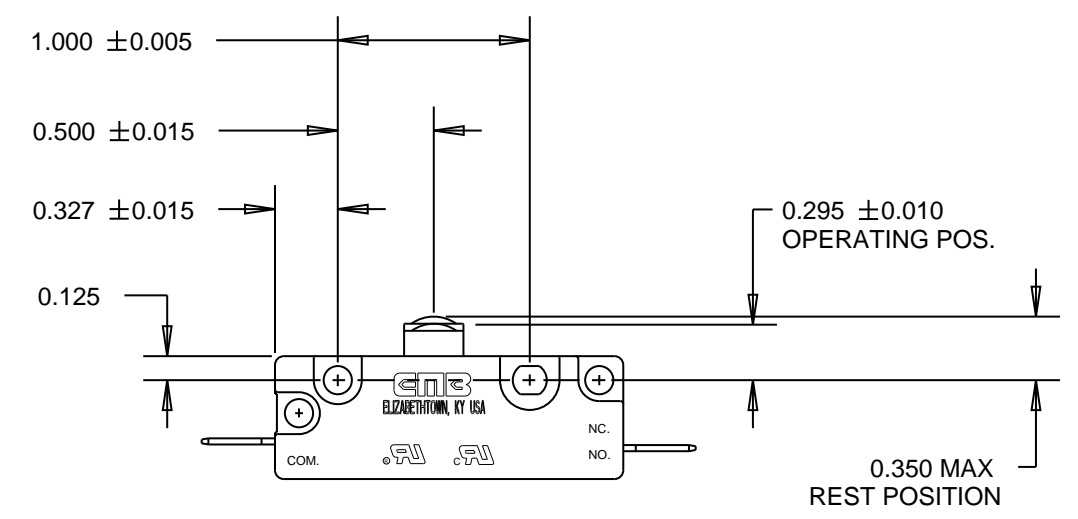
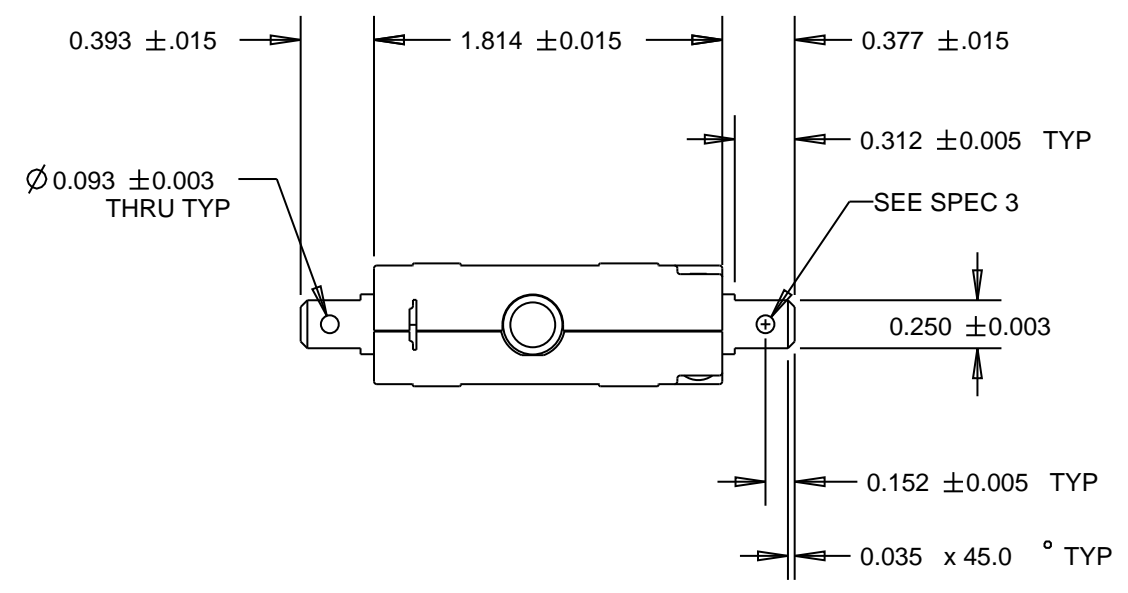


REVISIONS					
ECN	REV	DESCRIPTION	DATE	REVISED BY	APPROVED
2093	D	RELEASED FOR PRODUCTION	04/23/2003		



**SPECIFICATIONS:**

1. MODEL 301 SERIES SNAP-ACTION SWITCH S.P.S.T. NORMALLY OPEN CIRCUITRY WITH POWER LOAD SWITCHING CAPACITY - 25 AMPS 125-250 VAC, 1-1/2 HP 125 VAC, 2 HP 250 VAC

OPERATING FORCE - 20 OZ. MAX  
 RELEASE FORCE - 3 OZ. MIN  
 PRETRAVEL - 0.050 MAX  
 OVERTRAVEL - 0.050 MIN  
 MOVEMENT DIFFERENTIAL - 0.015 MAX

2. SWITCH IS U.L. RECOGNIZED AND C.S.A. CERTIFIED  
 3. TERMINALS - 0.032 BRASS QUICK CONNECT MALE TAB

UNLESS OTHERWISE SPECIFIED	SIGNATURES	DATE
DIMENSIONS ARE IN INCHES TOLERANCE ON	DRAWN MPB	12/12/91
2 PL DECIMALS ±	CHECKED NED	12/16/91
3 PL DECIMALS ± 0.010	APPROVED NED	12/16/91
ANGLES ±		
FRACTIONS ±		
NOTICE THESE DRAWINGS AND ALL SPECIFICATIONS ARE THE SOLE PROPERTY OF EMB CORP. AND SHALL NOT BE USED AS THE BASIS FOR MANUFACTURING OR SALE WITHOUT PRIOR WRITTEN PERMISSION.	▼ PROCESS CAPABILITY REQUIRED ▽ MONITORING REQUIRED CRITICAL CHARACTERISTIC CONTROL QP3 - 3.2.4	

**EMB CORPORATION**  
 ELIZABETHTOWN, KENTUCKY

**GENERAL PURPOSE SNAP-ACTION SWITCH**

SIZE <b>B</b>	DWG NO <b>303-9029</b>
SCALE <b>FULL</b>	FILE NO. <b>303-9029</b> SHEET <b>1 of 1</b>

DISTR TO