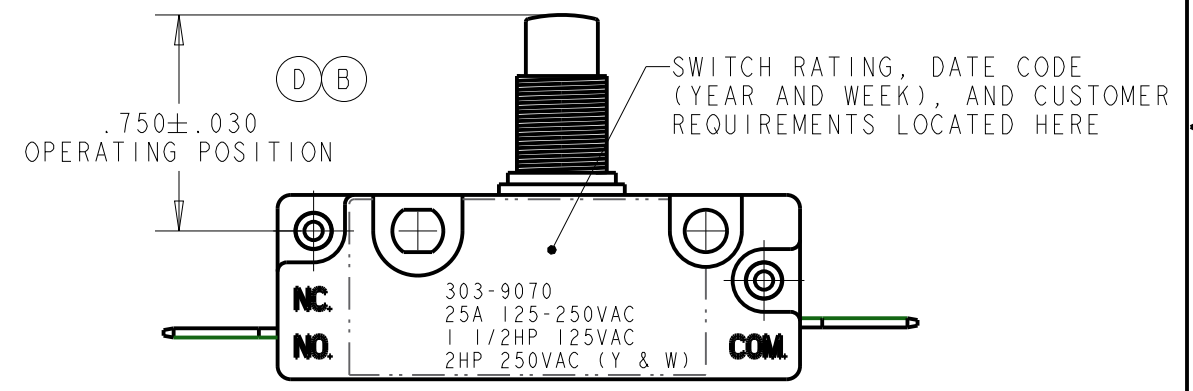
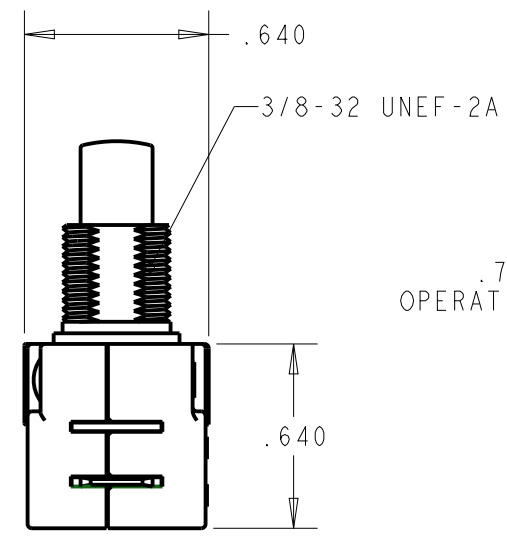
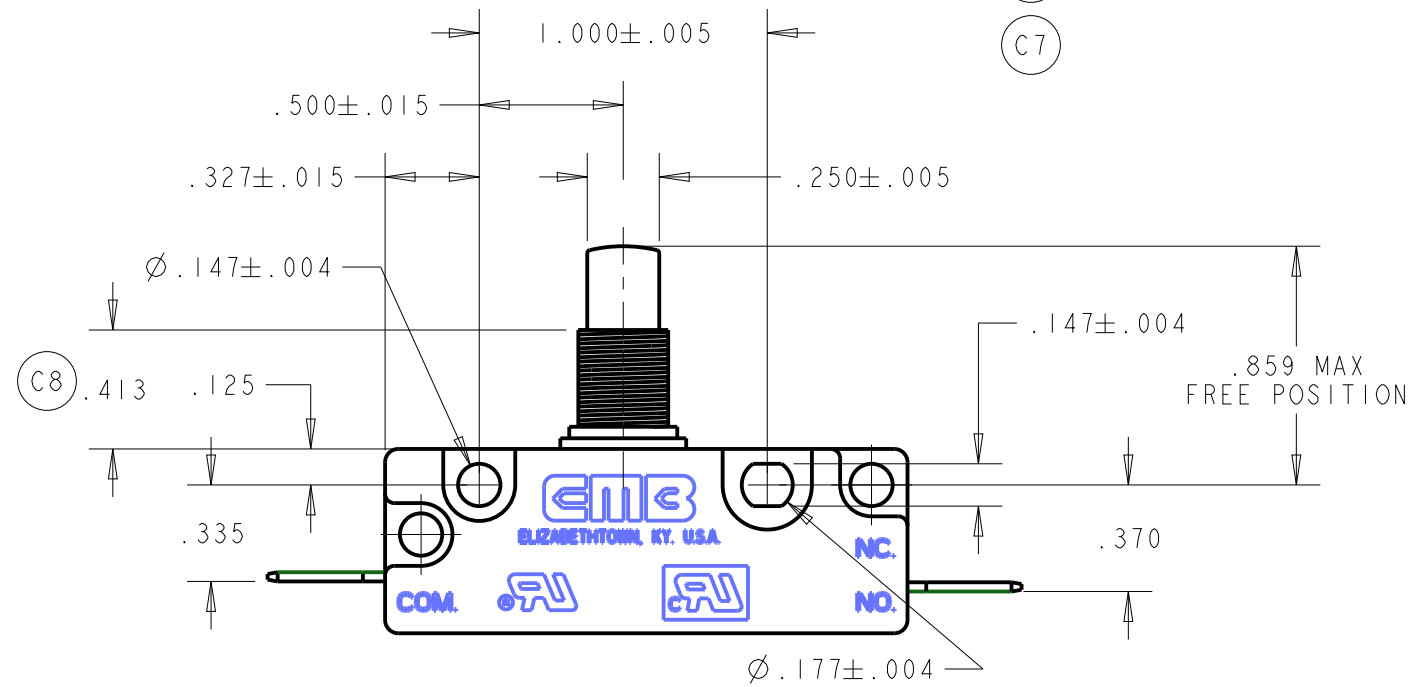
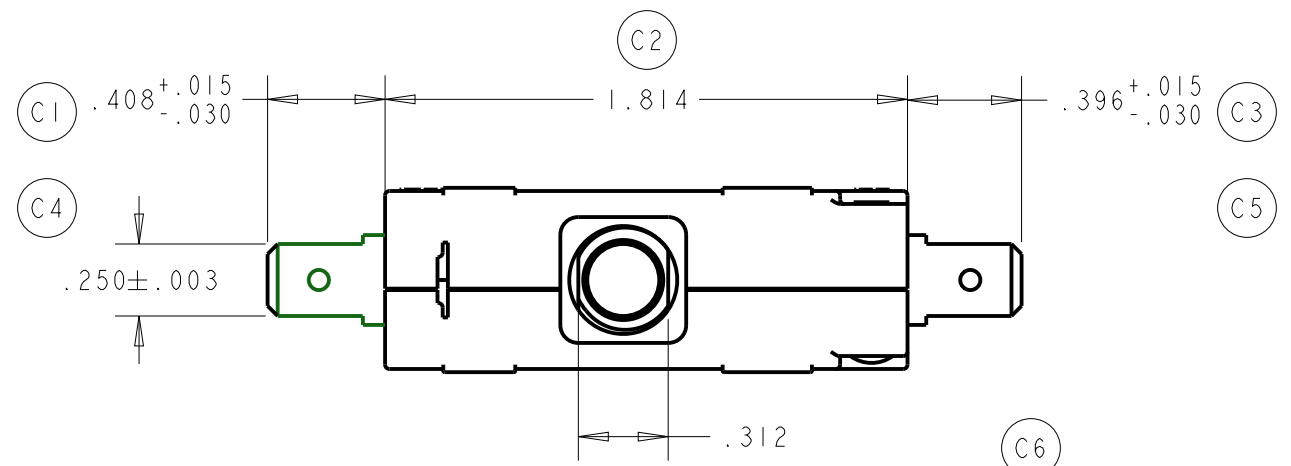


REVISIONS					
ECN	REV	DESCRIPTION	DATE	REVISED BY	APPROVED
2660	B	.706±.030 WAS .760±.030	04/04/2012	DKS	AEP
2679	C1 C2 C3 C4 C5 C6 C7 C8 C9	ADDED .408 +.015/-.030 (TOP VIEW) 1.814 WAS 1.814±.015 (TOP VIEW) .396 +.015/-.030 WAS .377±.015 (TOP VIEW) REMOVED .093±.003 (TOP VIEW) REMOVED .312±.005 (TOP VIEW) REMOVED .152±.005 (TOP VIEW) REMOVED .035 x 45.0° (TOP VIEW) .413 WAS .406±.015 (FRONT VIEW) ADDED PER UL 310 TO SPEC 3	08/20/2013	MPB	AEP
2730	D	.750±.030 WAS .706±.030	11/24/2014	DKS	



SPECIFICATIONS:

- MODEL 300 SERIES SNAP-ACTION SWITCH S.P.S.T. NORMALLY OPEN CIRCUITRY WITH POWER LOAD SWITCHING CAPACITY - 25 AMPS 125-250 VAC, 1 1/2 HP 125 VAC, 2 HP 250 VAC
 OPERATING FORCE - 32 OZ. MAX
 RELEASE FORCE - 3 OZ. MIN
 PRETRAVEL - .100 MAX
 OVERTRAVEL - .100 MIN
 MOVEMENT DIFFERENTIAL - .050 MAX
- SWITCH IS UL AND ULc RECOGNIZED
- TERMINALS - .032 THICK QUICK CONNECT MALE TAB PER UL 310
- 3/8-32 UNEF-2B HEX PANEL NUTS TO BE BULK PACKED 1 PER SWITCH

UNLESS OTHERWISE SPECIFIED	SIGNATURES	DATE
DIMENSIONS ARE IN INCHES TOLERANCE ON	DRAWN RNH	07/27/2007
2 PL DECIMALS ± .030	CHECKED DKS	02/26/2008
3 PL DECIMALS ± .010	APPROVED AEP	02/26/2008
ANGLES ± 3.000		
FRACTIONS ±		
NOTICE THESE DRAWINGS AND ALL SPECIFICATIONS ARE THE SOLE PROPERTY OF EMB CORP. AND SHALL NOT BE USED AS THE BASIS FOR MANUFACTURING OR SALE WITHOUT PRIOR WRITTEN PERMISSION.	▼ PROCESS CAPABILITY REQUIRED ▽ MONITORING REQUIRED CRITICAL CHARACTERISTIC CONTROL QP3 - 3.2.4	

EMB CORPORATION
ELIZABETHTOWN, KENTUCKY

GENERAL PURPOSE
SNAP ACTION SWITCH

SIZE B	DWG NO 303-9070
SCALE 1.500	FILE NO. 303-9070
SHEET 1 of 1	

DISTR TO