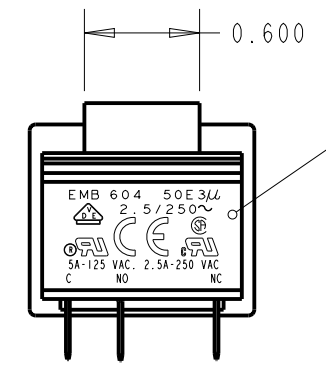
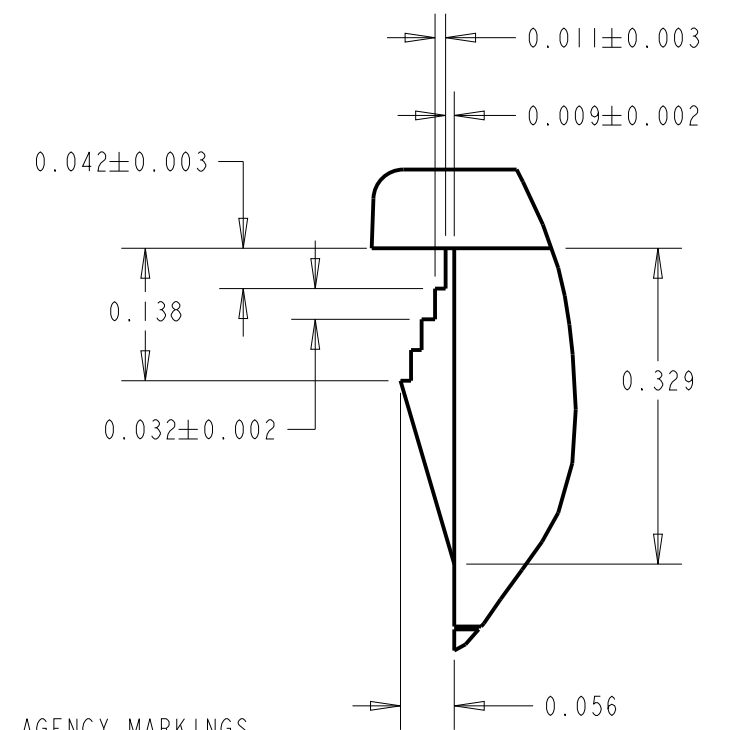
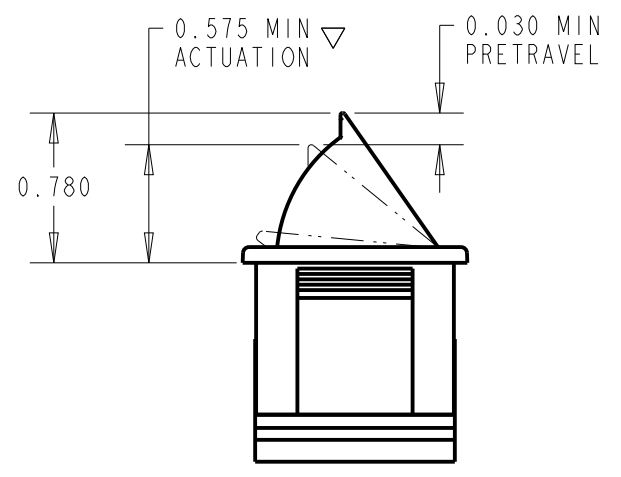
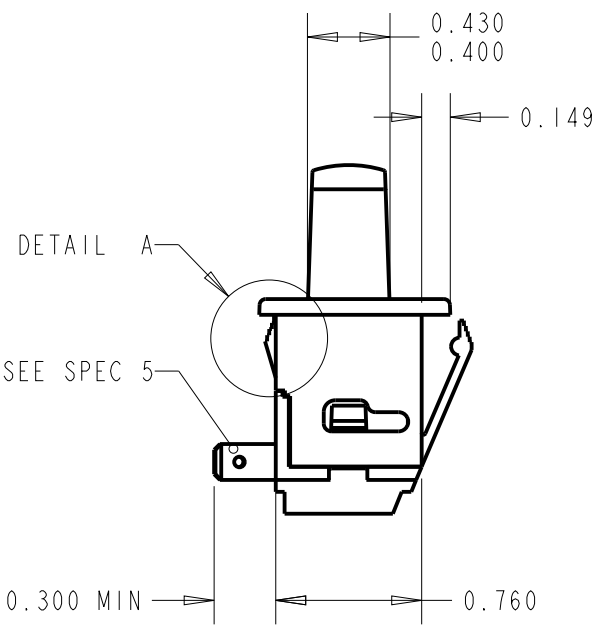
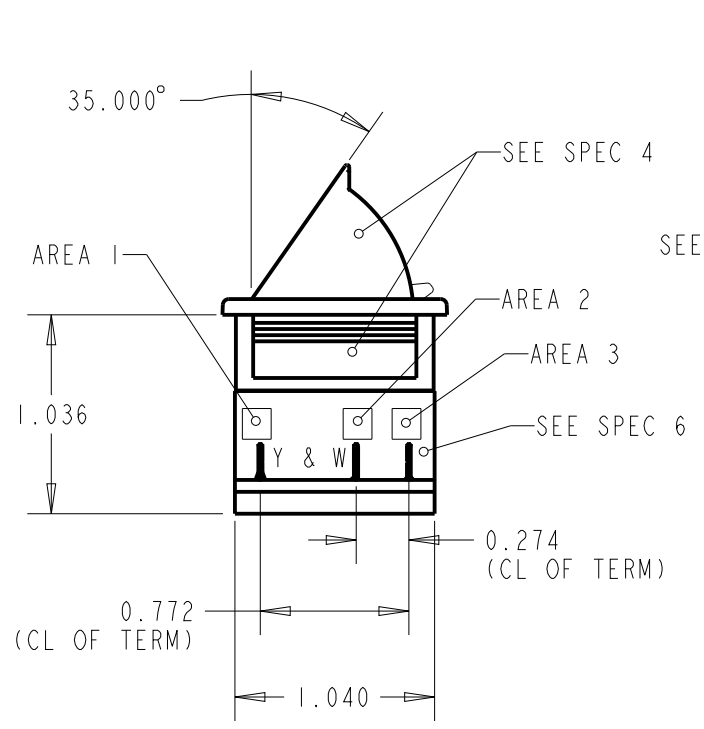
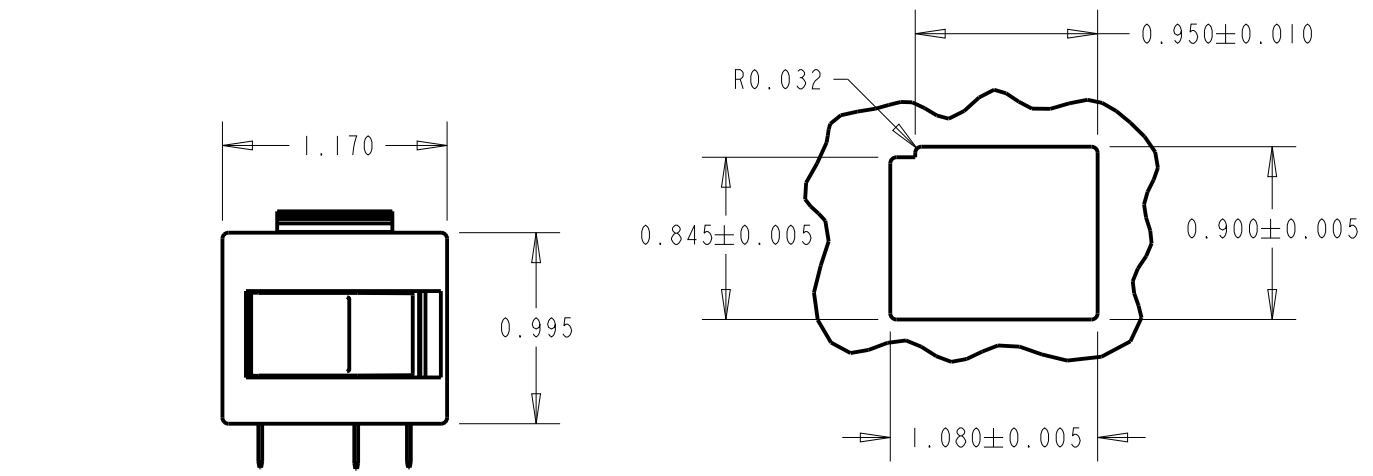


| REVISIONS | | | | | |
|-----------|-----|-------------------------------------------------------|----------|------------|----------|
| ECN | REV | DESCRIPTION | DATE | REVISED BY | APPROVED |
| 1707 | C | ADDED PART NUMBER TABLE THAT INCLUDES PART 604-9036-2 | 03/29/99 | MPB | |

RECOMMENDED SNAP IN MOUNTING HOLE DIMENSIONS
0.038 TO 0.100 THK MATL
(SEE SPEC 7)



RATINGS, AGENCY MARKINGS AND MODEL NO. PRINTED HERE - COLOR BLACK

DETAIL A
SCALE 5.000

SPECIFICATIONS:

- MODEL 604 NON SNAP ACTION SWITCH - SINGLE POLE DOUBLE THROW
5A-125VAC, 2.5A-250VAC
- AGENCY APPROVALS: UL, ULc, CSA, AND VDE
- OPERATING FORCE 8 OZ. MAX WITH ACTUATOR FULLY DEPRESSED
- ACTUATOR AND HOUSING MATERIAL TO MEET FLAMMABILITY CLASS UL 94V-2 PER SPEC UL 94. MATL / COLOR - WHITE NYLON
- QUICK CONNECT MALE TAB TERMINALS 0.187 x 0.020 THK PHOSPHOR BRONZE PER NEMA SPECIFICATIONS
- DATE CODE (YEAR & WEEK) STAMPED IN THIS AREA
- ON PIERCED HOLES BURRS SHOULD BE ON UNDERSIDE OF PANEL FOR POSITIVE FIT AND EASE OF ASSEMBLY

| | | | |
|-------------|----------------------|--------|--------|
| 604-9036-2 | Y | BB | BK |
| 604-9036 | | | |
| | AREA 1 | AREA 2 | AREA 3 |
| PART NUMBER | PRINT SPECIFICATIONS | | |

| UNLESS OTHERWISE SPECIFIED | SIGNATURES | DATE |
|--------------------------------------------------------------------------------------------------------------------------------------------------------------------------------|-------------------------------------------------------------------------------------------------------|-----------|
| DIMENSIONS ARE IN INCHES TOLERANCE ON | DRAWN MPB | 08-Dec-98 |
| 2 PL DECIMALS ± 0.01 | CHECKED DAS | 10-Dec-98 |
| 3 PL DECIMALS ± 0.015 | APPROVED AEP | 10-Dec-98 |
| ANGLES ± 2.0 | | |
| FRACTIONS ± 1/64" | | |
| NOTICE THESE DRAWINGS AND ALL SPECIFICATIONS ARE THE SOLE PROPERTY OF EMB CORP. AND SHALL NOT BE USED AS THE BASIS FOR MANUFACTURING OR SALE WITHOUT PRIOR WRITTEN PERMISSION. | ▼ PROCESS CAPABILITY REQUIRED ▽ MONITORING REQUIRED CRITICAL CHARACTERISTIC CONTROL QP3 - 3.2.4 | |

EMB CORPORATION
ELIZABETHTOWN, KENTUCKY

600 SERIES SWITCH

SIZE B DWG NO 604-9036

SCALE 1.000 FILE NO. 604-9036 SHEET 1 of 1

DISTR TO