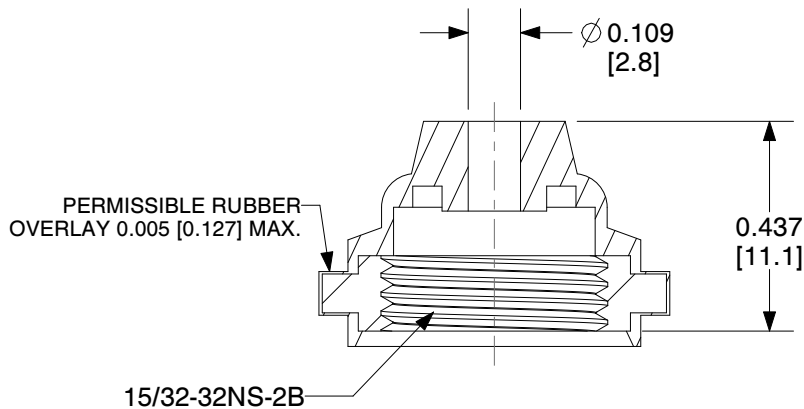
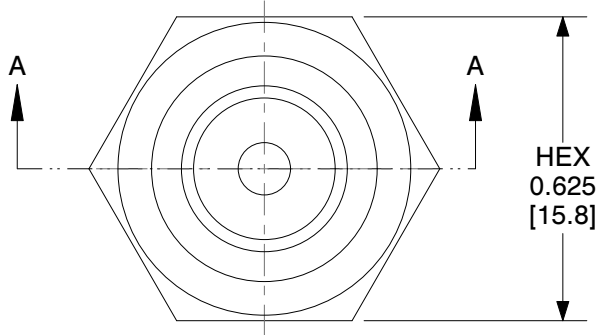
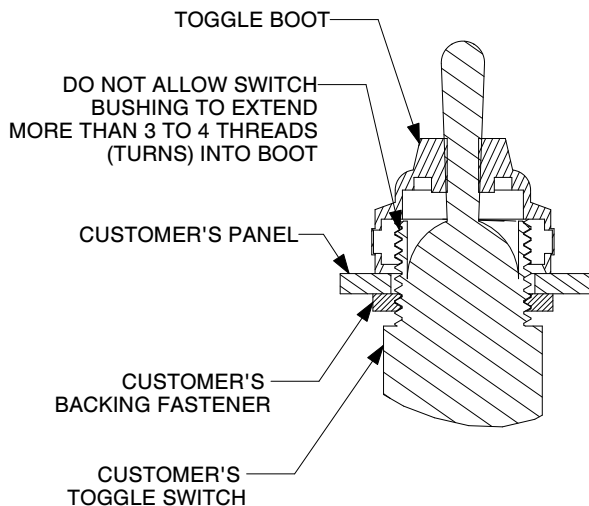
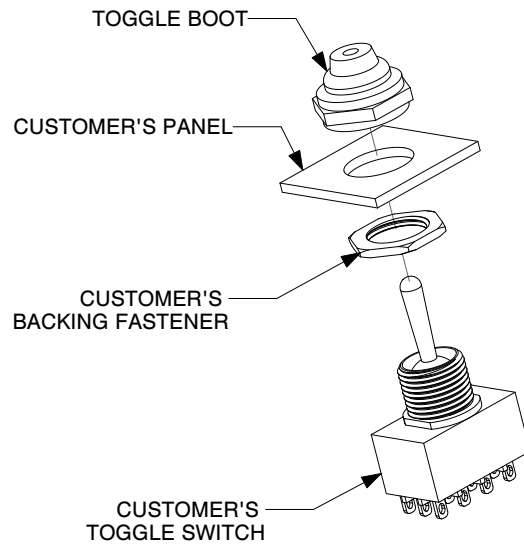


**SPECIFICATIONS**

**Material:** Silicone rubber conforms to ASTM D1418 GR50, Black (unless otherwise specified).  
**Mounting Nut:** Brass, black oxide (unless otherwise specified).  
**Temperature Range:** -80° F to +400° F (-62° C to +204° C).  
**Pressure Range:** Exceeds 15 psi internal and 1500 psi external.  
**Operational Life:** 50,000 actuations (minimum).  
**Shelf Life:** Excess of 25 years.  
**Resistant to:** Salt spray, sunlight, ozone, weather, fungus, and most acids and lubricating oils.  
**Agency Recognition:** UL & ULC Recognized to UL Std. 50



ALL DIMENSIONS ARE IN INCHES[MM]  
 TOLERANCES: UNLESS OTHERWISE NOTED ± 1/32 [±0.793].



G	CHANGED FORMAT	DAN LAW	04.12.13
F	HOLE DIMENSION WAS CORRECTED FROM 0.078" TO 0.109" PER MS SPEC.	S. GOK	06.04.09
E	CAD COMPUTER GENERATED		09.23.02
D	REDRAWN		10.11.74
REV.	DESCRIPTION	DATE	
MAXIMUM AND MINIMUM MEASUREMENTS ARE STATED DIRECTLY ON EACH DIMENSION.		ENG.	
TITLE: <b>BOOT, TOGGLE SWITCH EXPOSED BAT HANDLE</b>		DWN:	M.M. 06.06.61
MAT'L: SEE SPECIFICATIONS		CHKD.	KF/FK 01.24.13
FINISH: <b>APM-HEXSEAL CORPORATION</b>		SCALE	DWG.NO.
		<b>3:1</b>	<b>C1132/20</b>

THIS DRAWING COVERS PROPRIETARY ITEM AND IS THE PROPERTY OF THE APM-HEXSEAL CORPORATION.  
 THIS DRAWING IS NOT TO BE COPIED OR USED WITHOUT THE WRITTEN APPROVAL OF AN OFFICER OF THE APM-HEXSEAL CORPORATION.